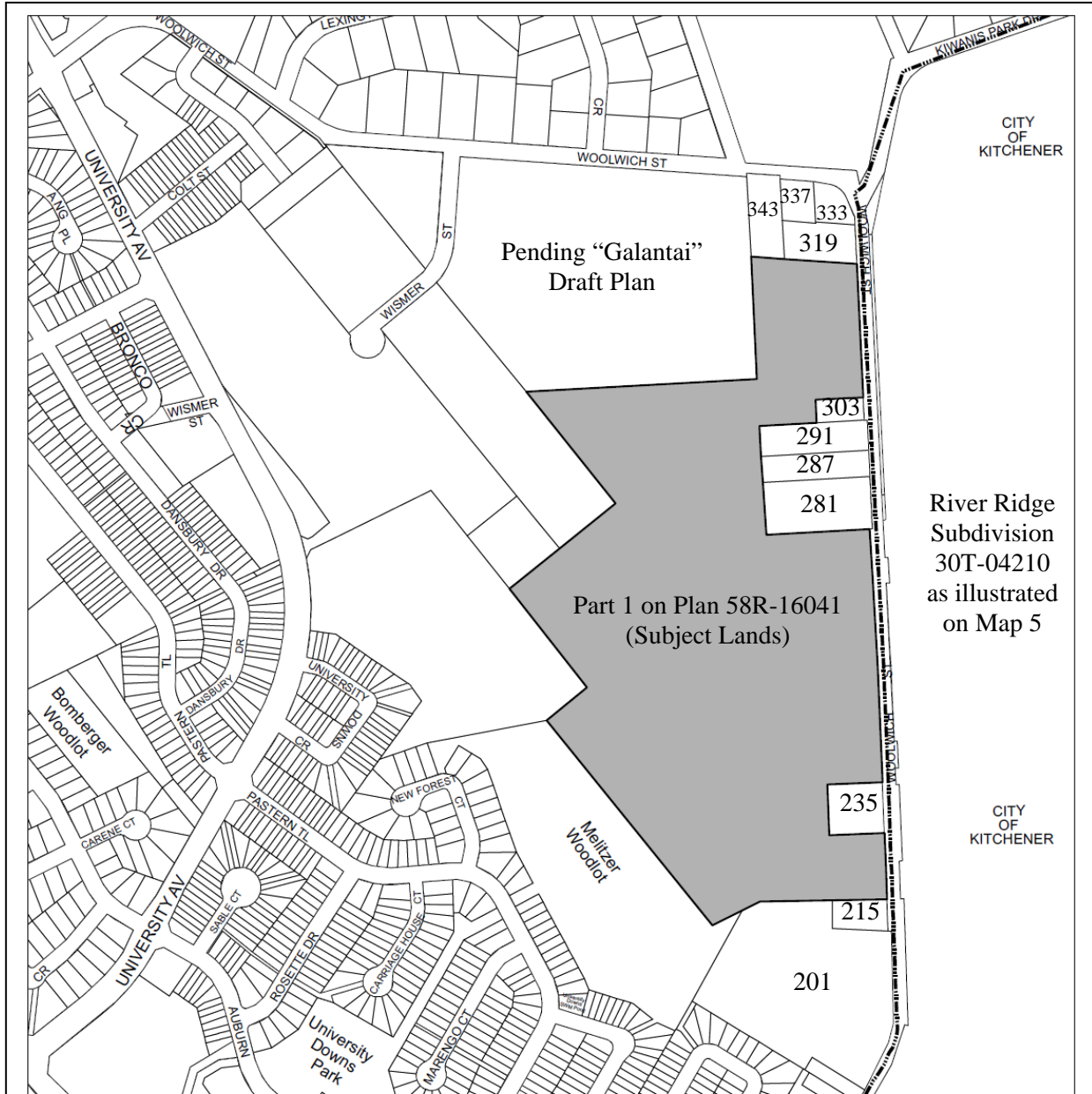


MAP 1

Location Map



SUBJECT LANDS



Scale N.T.S.

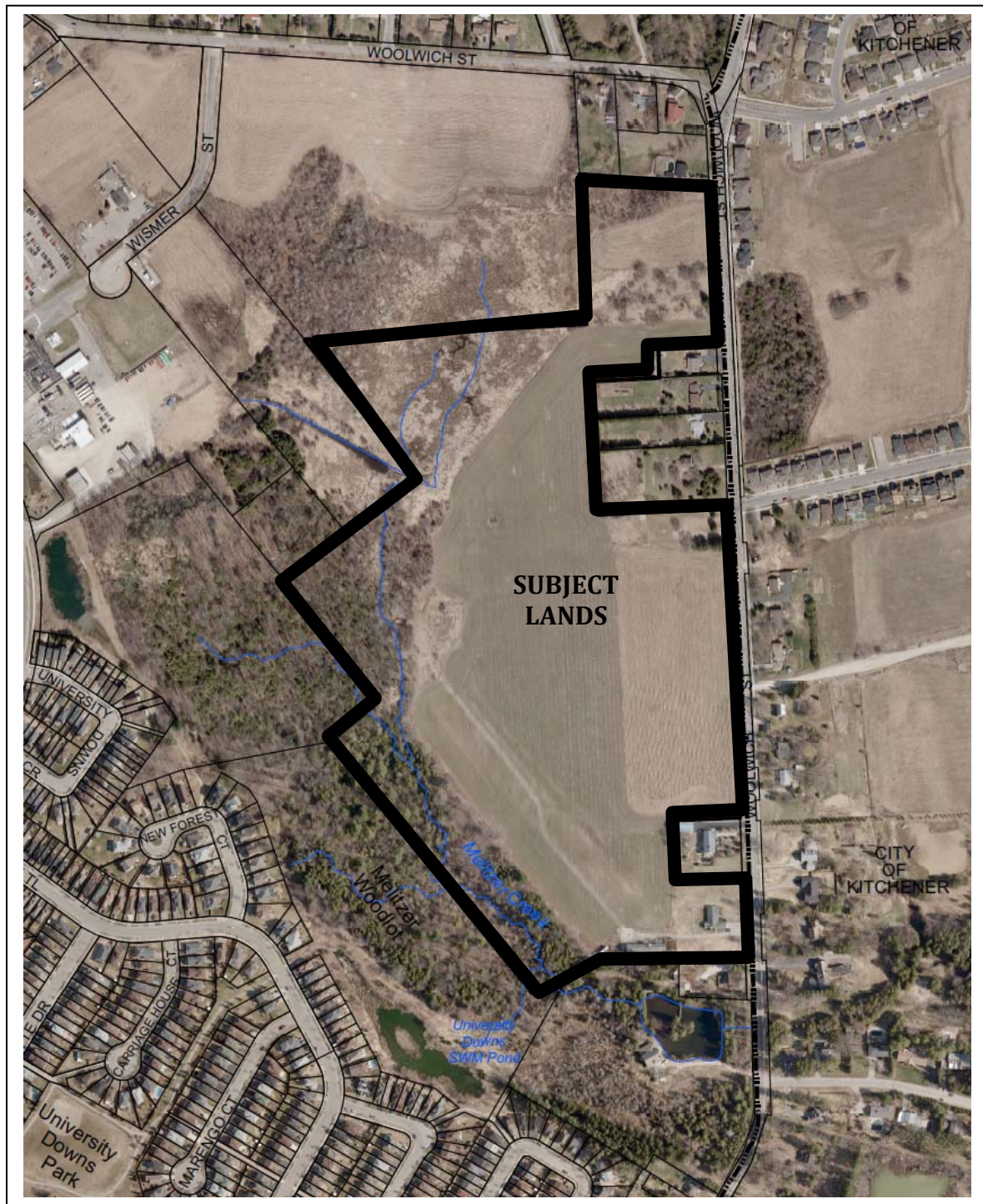
DATE: August 25, 2009

DRAWN BY: Development Services,
City of Waterloo

© Toronto Land Information Services Inc. and its licensors, 2007
May Not Be Reproduced without Permission
THIS IS NOT A PLAN OF SURVEY

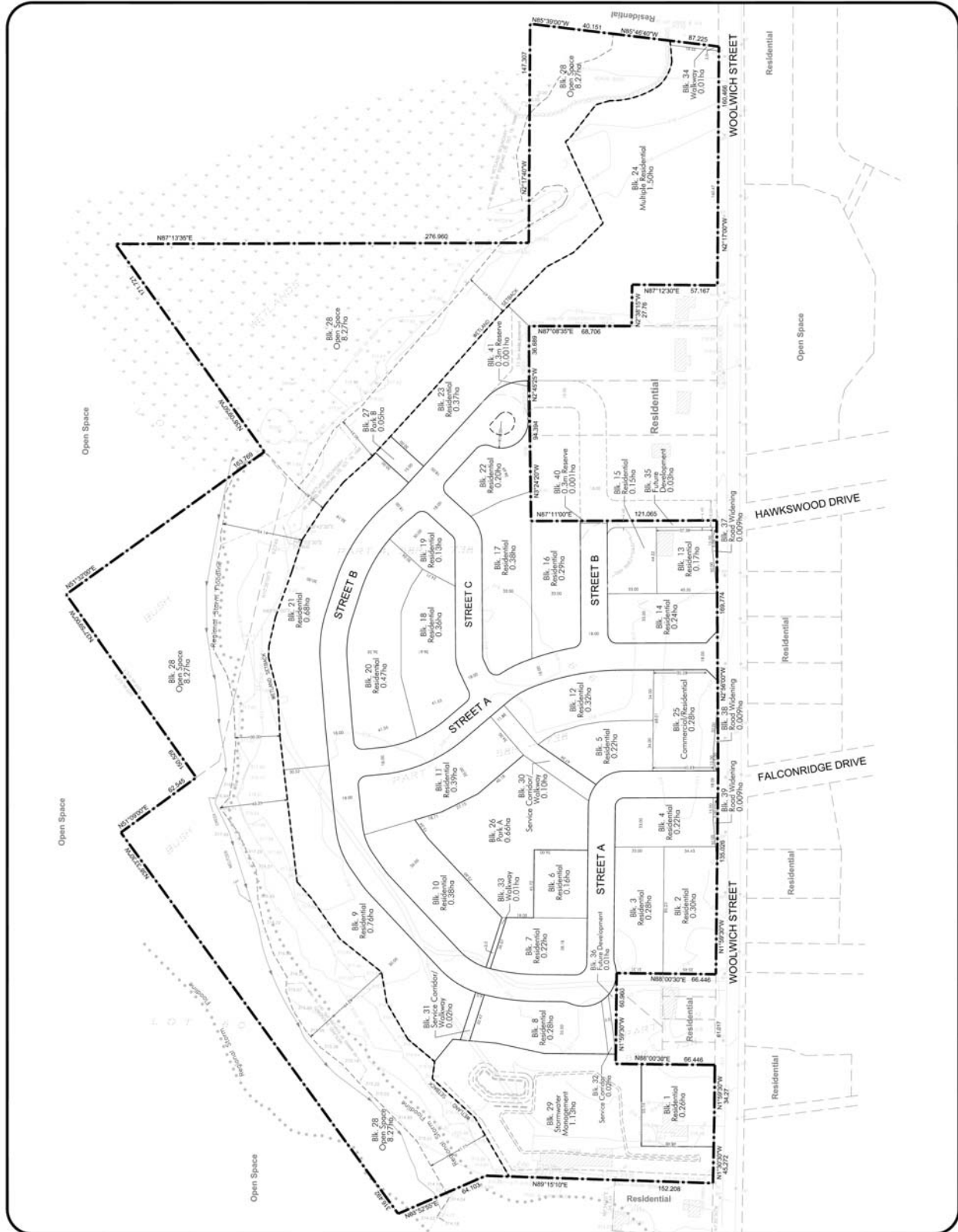
MAP 2

2009 Aerial Photograph – Subject Lands






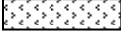


MAP 3

Proposed Draft Plan of Subdivision 30T-05401, Woolwich Estates (May 12, 2010)

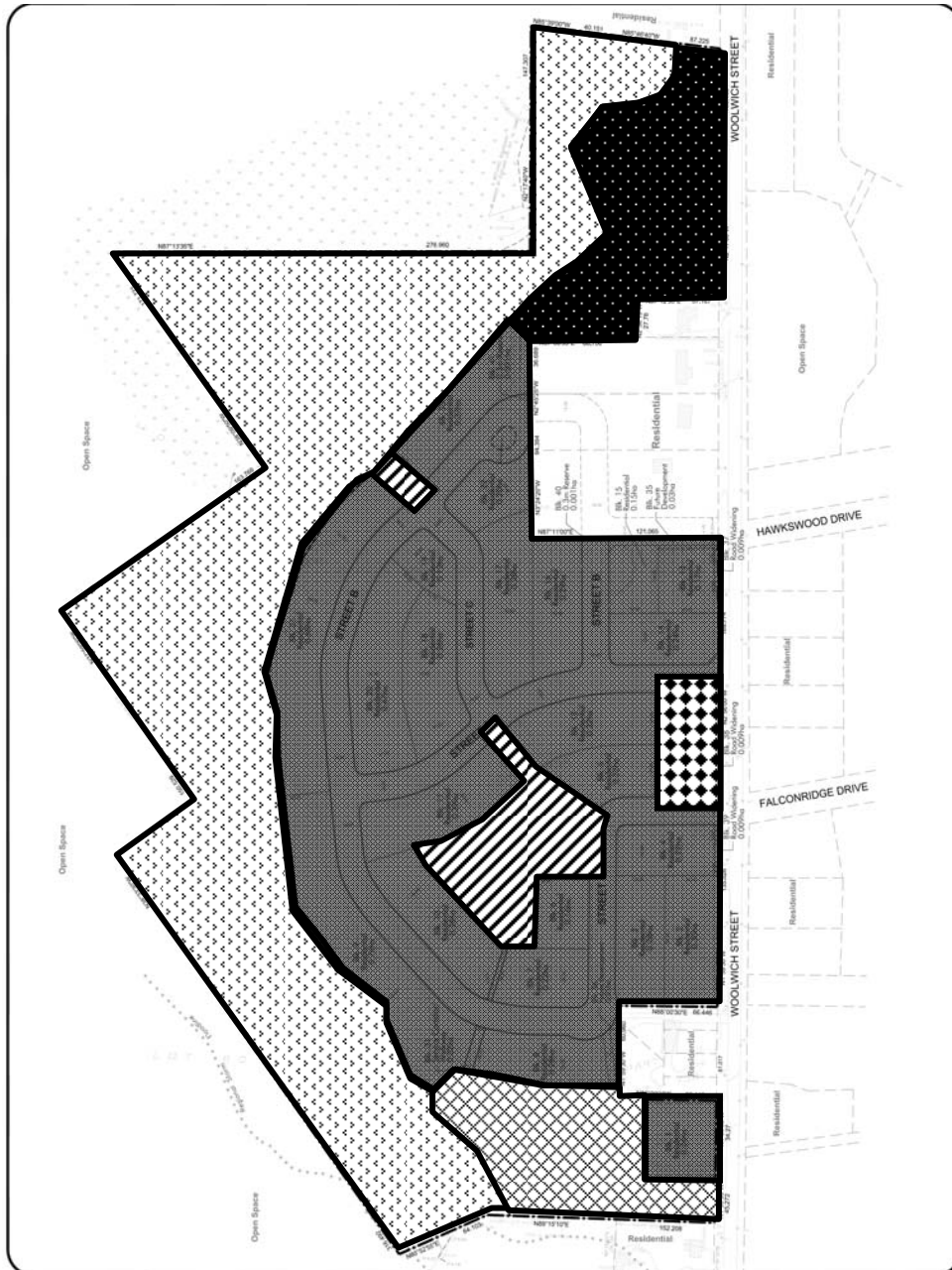


MAP 4

Proposed Zoning

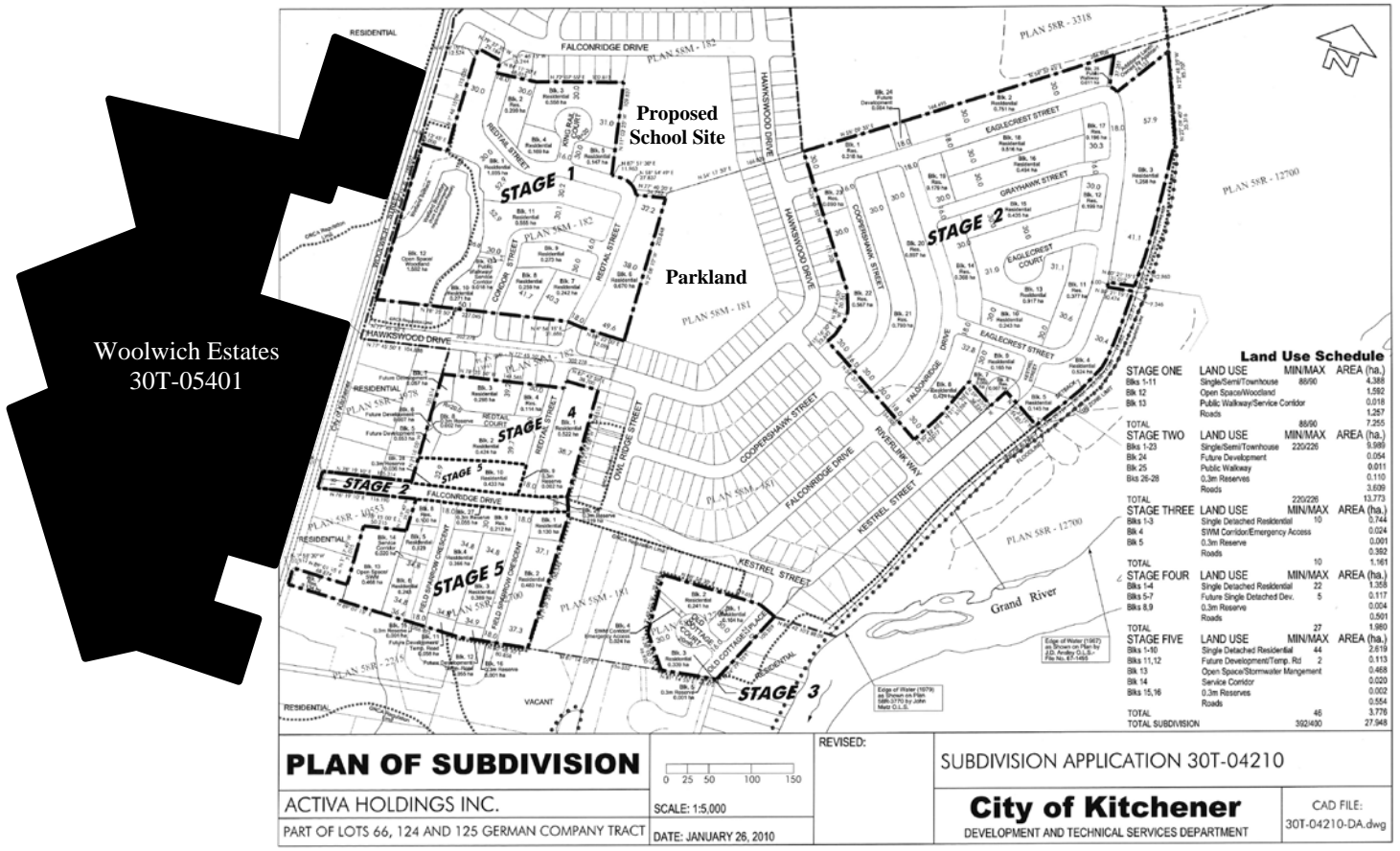
-  *Low Density Residential* – from Agricultural “A” to Residential “R” *
-  *Medium Density Block* – from Agricultural “A” to Medium Density 3 “MD-3” *
-  *Mixed Use Block* – from Agricultural “A” to Convenience Commercial “CC” *
-  *Open Space* – from Agricultural “A” to Green One “G1”
-  *Park/Corridor* – from Agricultural “A” to Green Two “G2”
-  *Stormwater Management* – from Agricultural “A” to Green Two “G2”

* denotes the application of site specific regulations



MAP 5

City of Kitchener
 Activa "River Ridge" Draft Plan of Subdivision 30T-04210
 (appealed to the Ontario Municipal Board)



Woolwich Estates
 30T-05401

| Land Use Schedule | | | | |
|-------------------|------------|----------------------------------|------------|--------|
| STAGE | LAND USE | MIN/MAX | AREA (ha.) | |
| STAGE ONE | Bks 1-11 | SingleDet/Townhouse | 8690 | 4.369 |
| | Bk 12 | Open Space/Woodland | | 1.592 |
| | Bk 13 | Public Walkway/Service Corridor | | 0.019 |
| | Roads | | | 1.257 |
| | TOTAL | | 8690 | 7.255 |
| STAGE TWO | Bks 1-23 | SingleDet/Townhouse | 229226 | 9.389 |
| | Bk 24 | Future Development | | 0.054 |
| | Bk 25 | Public Walkway | | 0.011 |
| | Bks 25-26 | 0.3m Reserves | | 0.110 |
| | Roads | | | 3.039 |
| TOTAL | | 229226 | 13.773 | |
| STAGE THREE | Bks 1-3 | Single Detached Residential | 9 | 0.744 |
| | Bk 4 | SWM Corridor/Emergency Access | | 0.024 |
| | Bk 5 | 0.3m Reserve | | 0.001 |
| | Roads | | | 0.362 |
| TOTAL | | 10 | 1.161 | |
| STAGE FOUR | Bks 1-4 | Single Detached Residential | 22 | 1.355 |
| | Bks 5-7 | Future Single Detached Dev. | 5 | 0.117 |
| | Bks 8-9 | 0.3m Reserve | | 0.004 |
| | Roads | | | 0.501 |
| TOTAL | | 27 | 1.969 | |
| STAGE FIVE | Bks 1-10 | Single Detached Residential | 44 | 2.619 |
| | Bks 11, 12 | Future Development/Temp. Rd | 2 | 0.113 |
| | Bk 13 | Open Space/Stormwater Management | | 0.468 |
| | Bk 14 | Service Corridor | | 0.020 |
| | Bks 15, 16 | 0.3m Reserves | | 0.052 |
| | Roads | | | 0.554 |
| TOTAL | | 46 | 3.776 | |
| TOTAL SUBDIVISION | | | 392490 | 27.945 |

| | | | | |
|---|--|------------------------|---|--|
| PLAN OF SUBDIVISION | | REVISED: | SUBDIVISION APPLICATION 30T-04210 | |
| ACTIVA HOLDINGS INC. | | SCALE: 1:5,000 | City of Kitchener | |
| PART OF LOTS 66, 124 AND 125 GERMAN COMPANY TRACT | | DATE: JANUARY 26, 2010 | DEVELOPMENT AND TECHNICAL SERVICES DEPARTMENT | |
| | | | CAD FILE: 30T-04210-DA.dwg | |