

# 1. Introduction

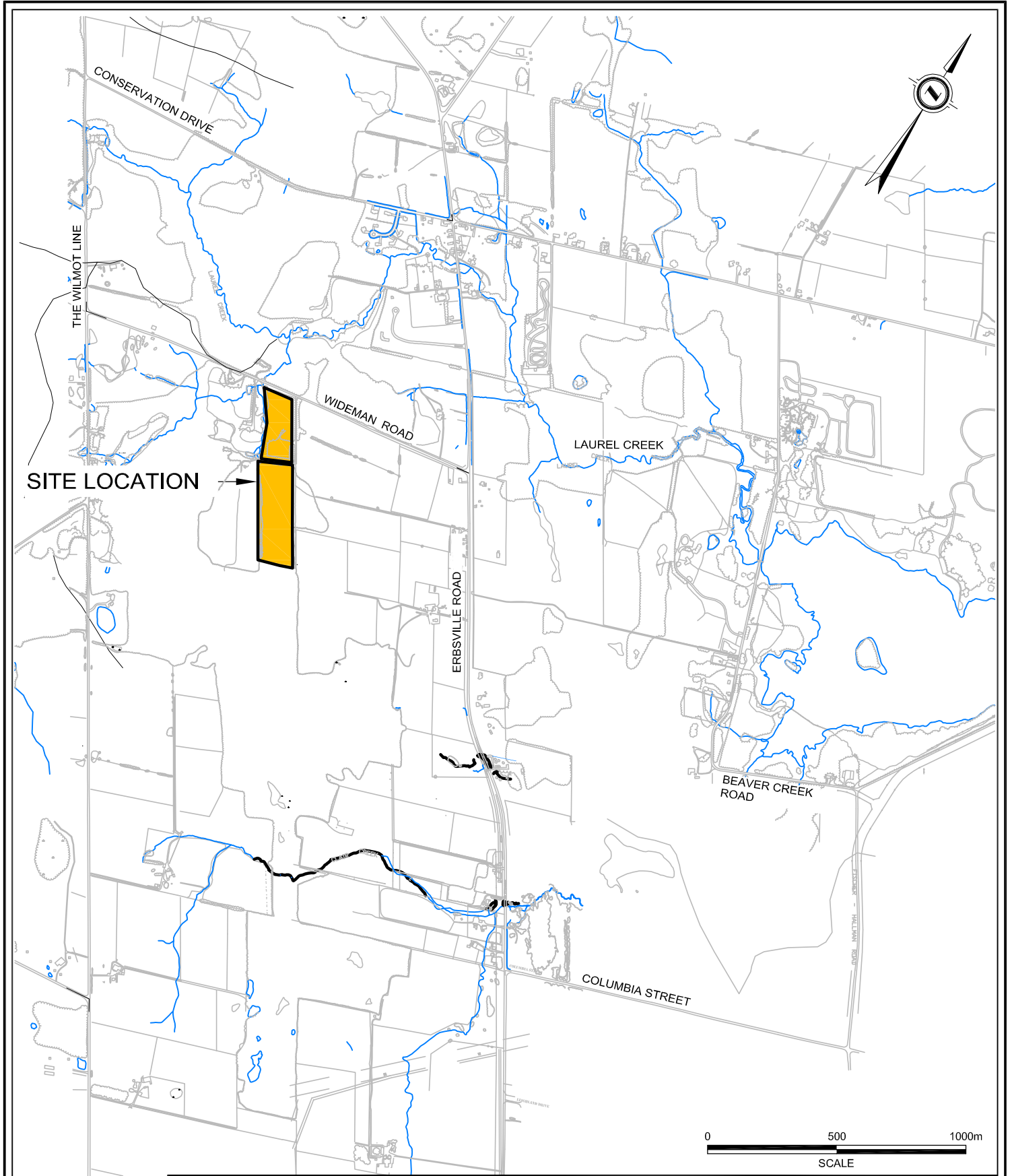
---

CH2M HILL Canada Limited (CH2M HILL) was retained by Doug Owen Construction Limited (Owen) to conduct a site investigation at the Wideman Road property (White Tail Crossing) in Waterloo, Ontario (Figure 1-1). The report presents hydrogeological and geotechnical information for the subject site as well as surrounding properties. The project was initiated to fill data gaps and address previous recommendations by CH2M HILL, the Waterloo Citizen's Environmental Advisory Committee (WCEAC) and Ecological and Environmental Advisory Committee (EEAC). The borehole and piezometer locations were agreed to by Planning and Engineering Initiatives (PEIL), Naylor Engineering, the City of Waterloo (Ron Ormson, P.Geo.) and the Region of Waterloo (Don Corbett, P. Geo.).

## 1.1 Objectives

The objectives of this site investigation were threefold and are outlined below.

1. The subsurface stratigraphy had been characterized during a previous investigation by CH2M HILL. The historical report identified a surficial sand/silt layer underlain by a silt/clay layer in the north portion of the site. Test pits completed during the previous investigation were too shallow to confirm if the silt/clay layer extended to the south. Additional data have been collected to supplement the existing data and to assess if the silt/clay unit is continuous across the site.
2. A number of private wells are located in the vicinity of the Wideman Road property. A private well survey was undertaken to identify the private wells within 500 m of the side boundary. Data have been collected to assess potential well interference and the impact from the proposed development on quantity and quality of groundwater recharge.
3. A geotechnical investigation has been undertaken to assess site conditions, and provide information for subdivision design. This report is issued as a separate document and presented in Appendix A.



**CH2MHILL**

PROJECT No. 346336.06.RP

DOUG OWEN CONSTRUCTION LTD.  
WIDEMAN ROAD PROPERTY

FIGURE 1-1  
SITE LOCATION PLAN