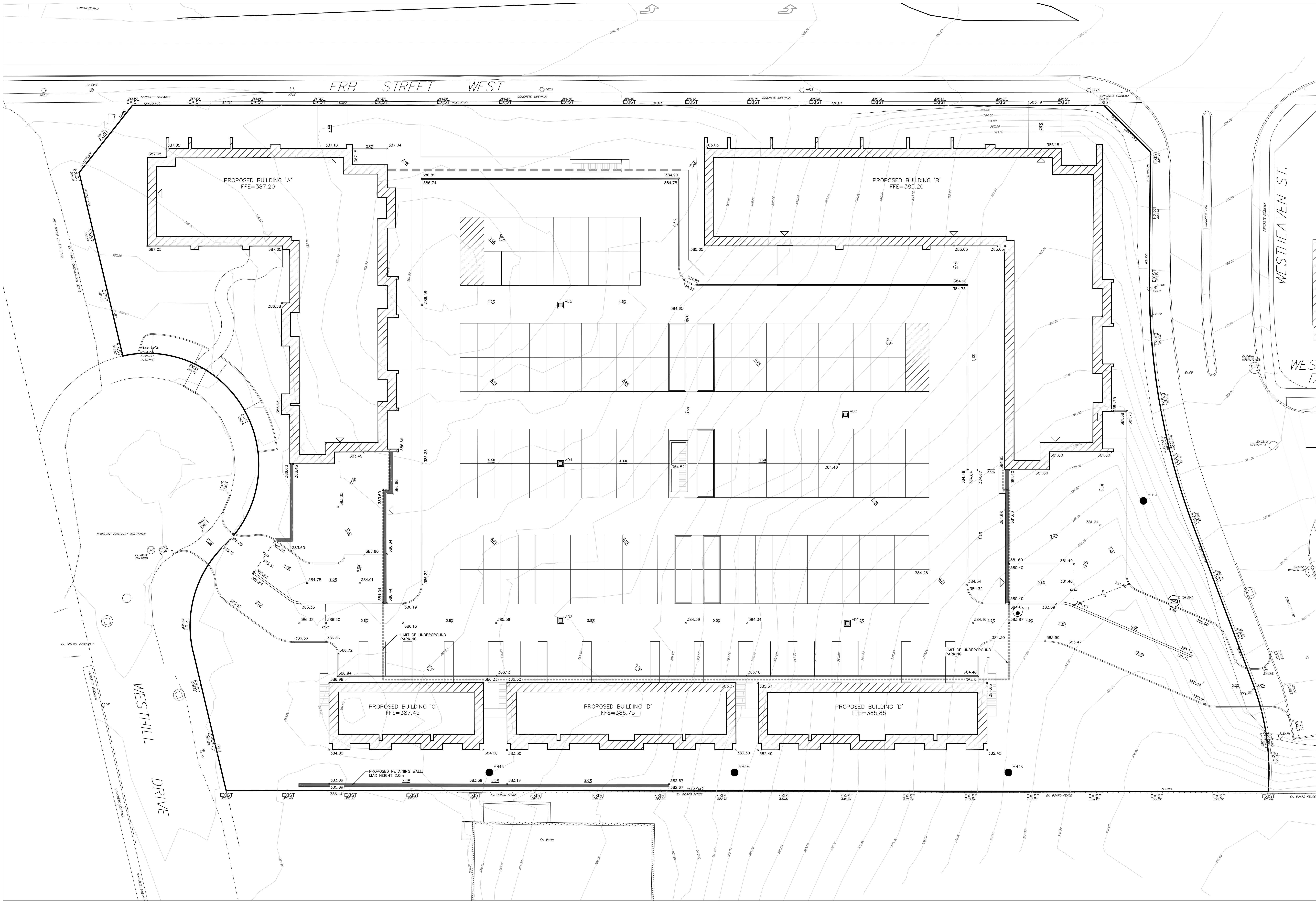


KEY MAP - N.T.S.



BENCHMARK SURVEY COORDINATES ARE IN UTM NAD-83 ZONE 17 AND ELEVATIONS ARE GEODETIC BOTH WERE DERIVED FROM THE LEICA SMARTNET COMMERCIAL GNSS RTK NETWORK. LEGAL SURVEY INFORMATION PROVIDED BY MCDONALD FAMILY LTD SURVEYING DATED JANUARY 31, 2017. PHOTOGRAPHIC SURVEY PROVIDED BY BE GROUP DATED FEBRUARY 15, 2017.

LEGAL DESCRIPTION PLAN OF SURVEY OF PART OF LOT 11, MUNICIPAL COMPLETED PLAN 907 AND PART OF LOTS 15 AND 17 AND PART OF RESERVE LOTS 57 AND 17 MUNICIPAL COMPLETED PLAN 608 FORMERLY IN THE TOWN OF HESPELER, CITY OF CAMBRIDGE REGIONAL MUNICIPALITY OF WATERLOO

Table with columns for DATE, TIME, and BY, containing entries for 2017, 10:00 AM, and IBI GROUP INC.

APPROVALS table with columns for NAME, TITLE, and SIGNATURE, currently empty.

IBI GROUP 101 - 410 Albert Street Waterloo ON N2L 3V3 Canada Tel: 519 586 2255 Fax: 519 586 2269 ibigroup.com

CITY OF WATERLOO REGION OF WATERLOO BEL COMMUNITIES LIMITED PARTNERSHIP 635 ERB STREET WEST

PRELIMINARY SITE GRADING PLAN DESIGNED BY: SW SCALE HORIZ: 1:200 DRAWN BY: SW SCALE VERT: 1:100 FILE NUMBER: 102205 CHECKED BY: JAMES SHEPHERD DATE: JUNE 16, 2017 SHEET NUMBER: 02