

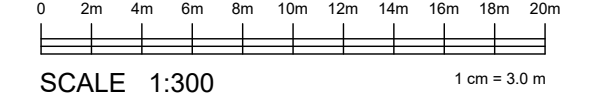
I REQUIRE THIS PLAN TO BE DEPOSITED UNDER THE LAND TITLES ACT.
 NOVEMBER, 2018
 J. PATRICK HARAMIS, O.L.S.

PLAN 58R-
 RECEIVED AND DEPOSITED
 REPRESENTATIVE FOR LAND REGISTRAR FOR THE LAND TITLES DIVISION OF WATERLOO (58)
 J. PATRICK HARAMIS, O.L.S.

SCHEDULE			
Part	Lot	Plan	PIN
1	PART OF BLOCK 'F'	1467	22279-0008 (LT)
2	PART OF BLOCK 'F'	1467	22279-0008 (LT)

NOTE: PARTS 1 & 2 COMPRISE ALL OF THE LANDS DESCRIBED BY PIN 22279-0008 (LT).

PLAN OF SURVEY
 of
 PART OF BLOCK 'F'
 REGISTERED PLAN 1467
 in the
 CITY OF WATERLOO
 REGIONAL MUNICIPALITY OF WATERLOO



SCALE 1:300
 METRIC DISTANCES AND COORDINATES SHOWN ON THIS PLAN ARE IN METRES AND CAN BE CONVERTED TO FEET BY DIVIDING BY 0.3048.
 ACI AUER CAMPBELL & IMS SURVEY CONSULTANTS INC. ONTARIO LAND SURVEYORS

BEARING REFERENCE

BEARINGS ARE ASTRONOMIC AND ARE REFERRED TO THE WESTERN LIMIT OF PART 2 AS SHOWN ON REFERENCE PLAN 58R-3589, HAVING A BEARING OF N 15° 19' 30" W.

- LEGEND
- IB - IRON BAR
 - RIB - ROUND IRON BAR
 - SIB - STANDARD IRON BAR
 - SSIB - SHORT STANDARD IRON BAR
 - CP - CONCRETE PIN & WASHER
 - SM - SURVEY MONUMENT FOUND
 - MS - SURVEY MONUMENT SET
 - OU - ORIGIN UNKNOWN
 - ACI - AUER CAMPBELL & IMS SURVEY CONSULTANTS
 - 983 - J. D. ANSLEY, O.L.S.
 - P1 - REGISTERED PLAN 1467
 - P2 - PLAN 58R-3589

SURVEYOR'S CERTIFICATE

I CERTIFY THAT:
 1. THIS SURVEY AND PLAN ARE CORRECT AND IN ACCORDANCE WITH THE SURVEYS ACT, THE SURVEYORS ACT AND THE LAND TITLES ACT AND THE REGULATIONS MADE UNDER THEM.
 2. THE SURVEY WAS COMPLETED ON THE ____th DAY OF ____, 2018.
 DATE: ____, 2018

J. PATRICK HARAMIS, ONTARIO LAND SURVEYOR

ACI SURVEY CONSULTANTS
 ONTARIO LAND SURVEYORS
 582 FREDERICK ST. KITCHENER, ON
 T: 519-578-2220 F: 519-578-6044
 DATE: 2018-11-29
 RelPlan
 FILE NUMBER: WAT-1467-PL-17744

OBSERVED REFERENCE POINTS

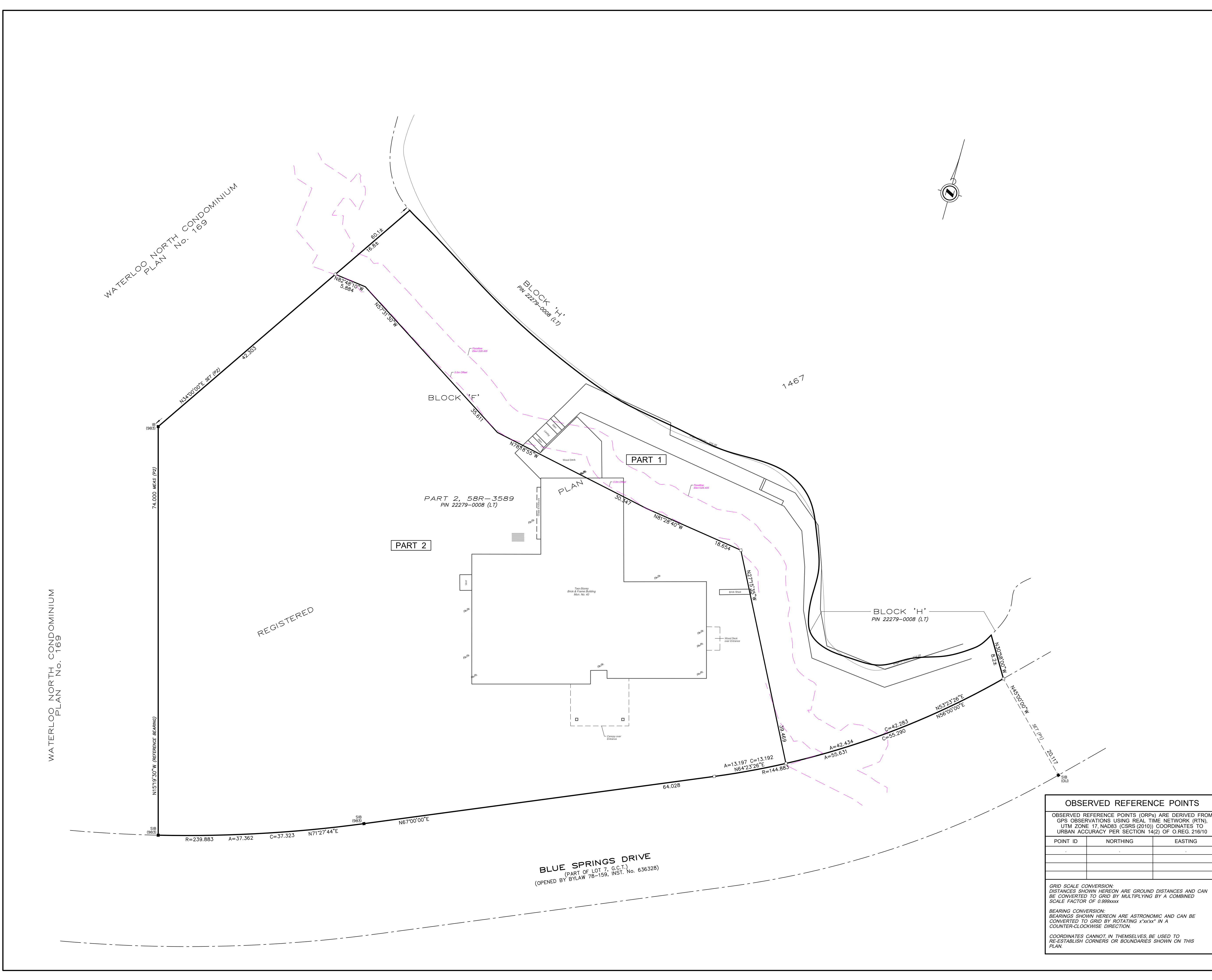
OBSERVED REFERENCE POINTS (ORPs) ARE DERIVED FROM GPS OBSERVATIONS USING REAL TIME NETWORK (RTN), UTM ZONE 17, NAD83 (CSRS (2010)) COORDINATES TO URBAN ACCURACY PER SECTION 14(2) OF O.REG. 216/10

POINT ID	NORTHING	EASTING

GRID SCALE CONVERSION:
 DISTANCES SHOWN HEREON ARE GROUND DISTANCES AND CAN BE CONVERTED TO GRID BY MULTIPLYING BY A COMBINED SCALE FACTOR OF 0.999999999.

BEARING CONVERSION:
 BEARINGS SHOWN HEREON ARE ASTRONOMIC AND CAN BE CONVERTED TO GRID BY ROTATING x°xxx' IN A COUNTER-CLOCKWISE DIRECTION.

COORDINATES CANNOT, IN THEMSELVES, BE USED TO RE-ESTABLISH CORNERS OR BOUNDARIES SHOWN ON THIS PLAN.



WATERLOO NORTH CONDOMINIUM
 PLAN No. 169

WATERLOO NORTH CONDOMINIUM
 PLAN No. 169

REGISTERED

BLUE SPRINGS DRIVE
 (PART OF LOT 7, G.C.1.)
 (OPENED BY BYLAW 78-159, INST. No. 636328)