

August 24, 2017

City of Waterloo  
Development Services Building Department 2<sup>nd</sup> Floor  
100 Regina Street South  
Waterloo, ON  
N2J 4A8

Re: **Spatial Separation and Exposed Building Face Calculations**  
**35-37-41 King Street, Waterloo, Ontario**  
Project No.: 1816-1

To whom it may concern,

The proposed 3 storey addition to the existing historic Waterloo Post Office at 35 King Street North will consist of one ground floor dedicated to E Occupancies and two upper floors dedicated to D Occupancies. The building will also include enclosed F3 indoor parking area. For the purpose of calculating area of exposed building face, fire comparts were separated by Occupancies and not at the level of horizontal floor plates. Figures 1 through 5 depict the propose exposed building faces and their unprotected openings.

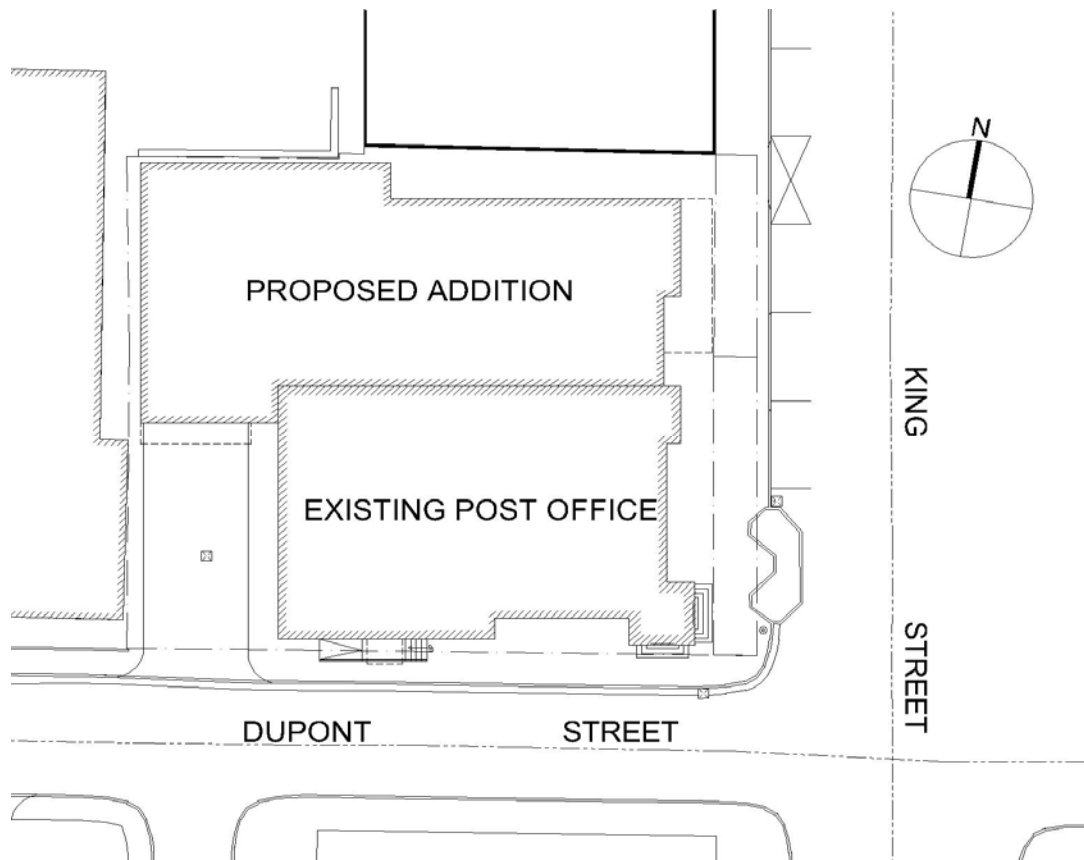


Figure 1

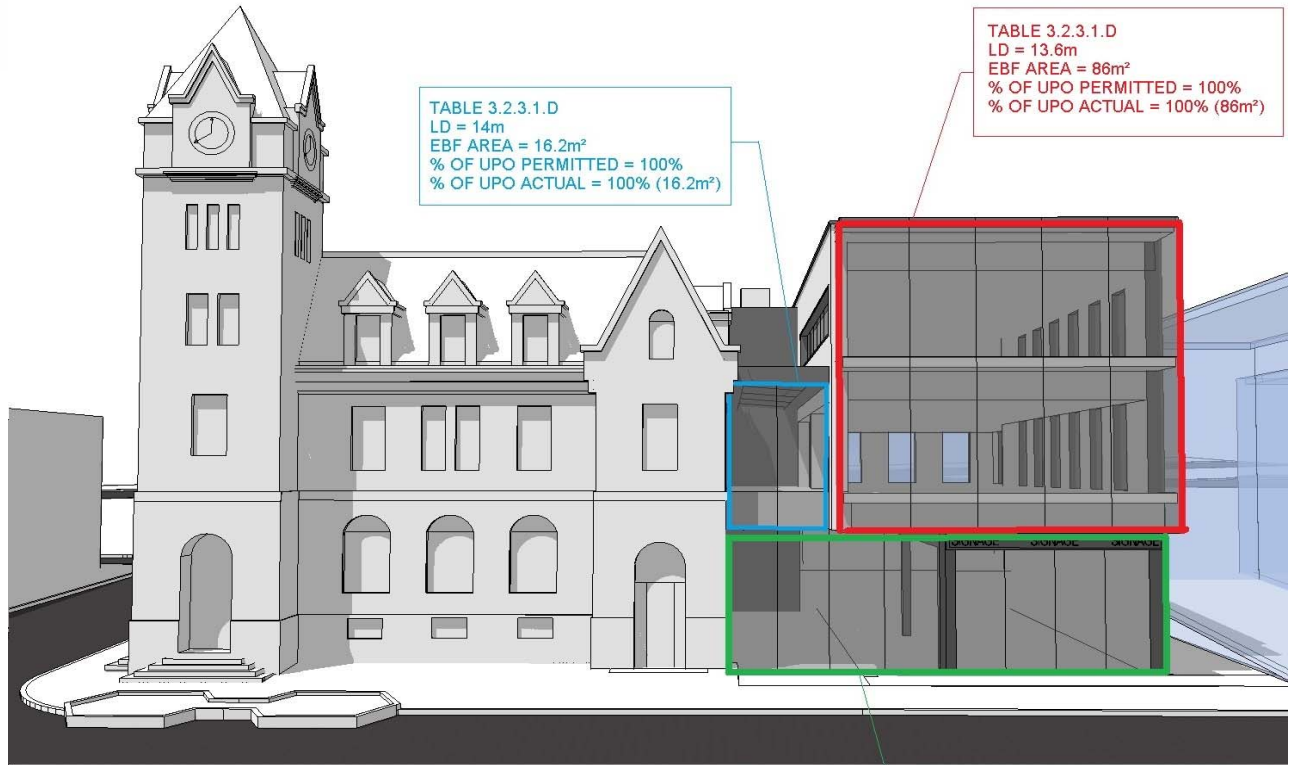


Figure 2 – east elevation

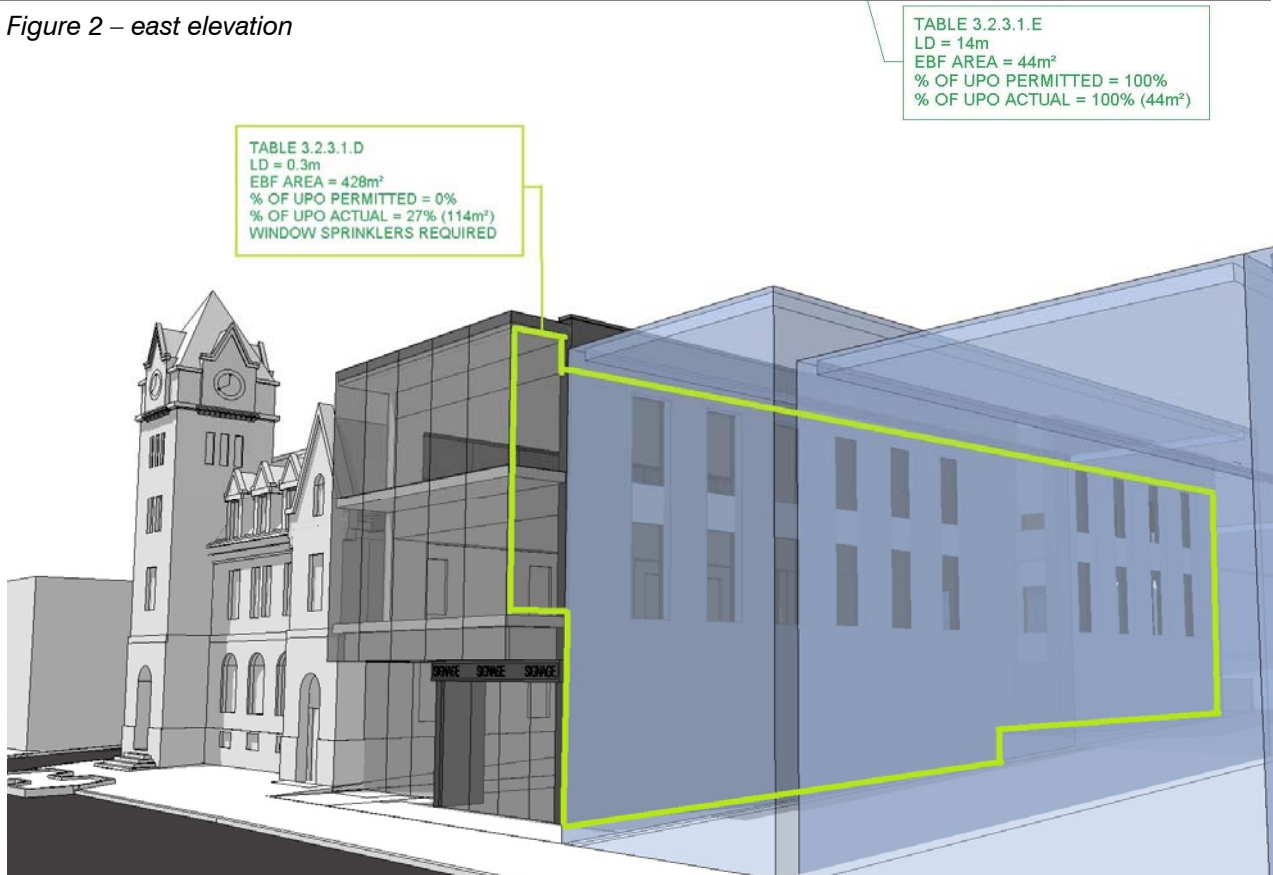


Figure 3 – north elevation

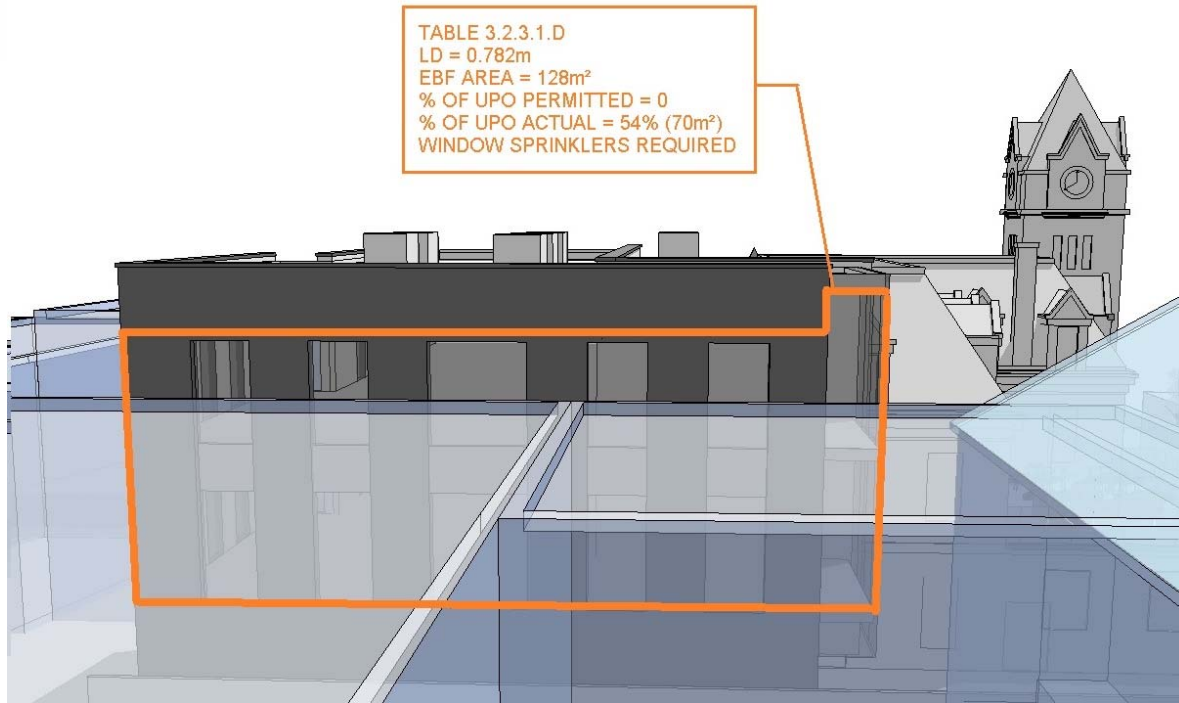


Figure 4 – west elevation

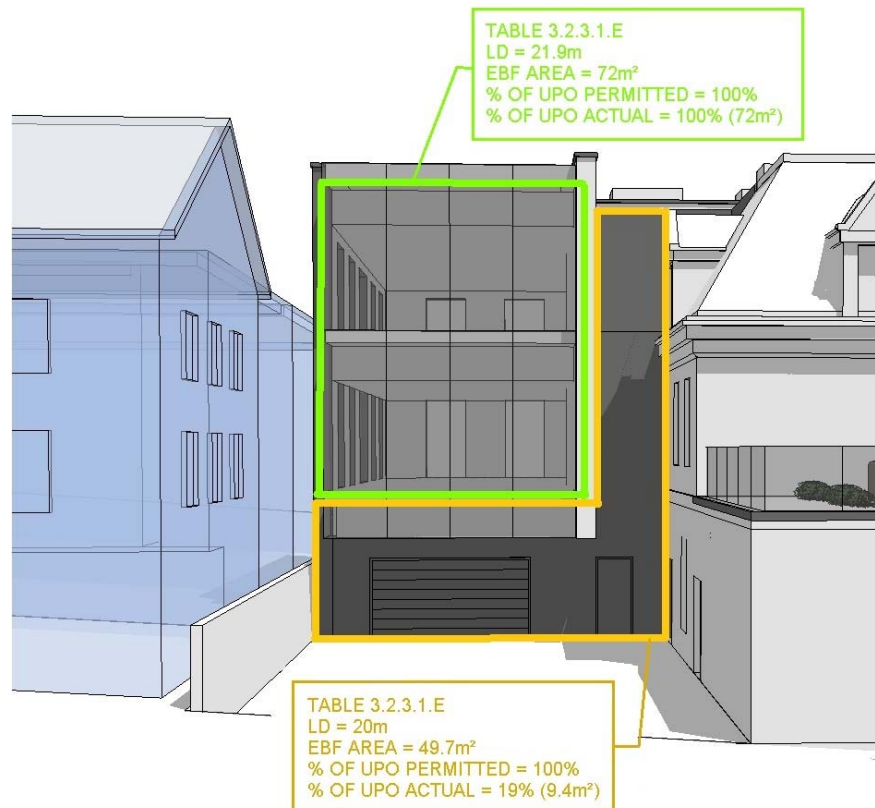


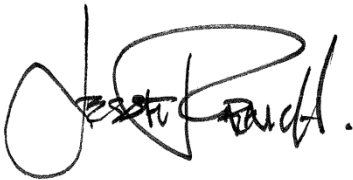
Figure 5 – south elevation

Based on this preliminary study, the north and west elevations will require window sprinklers in accordance with OBC 2012, Division B – Part 3, 3.1.8.18 and ULC/ORD C263.1 for “Sprinkler-Protected Windows Systems”.

Trusting this meets the requirement of your office, should you have any questions, concerns or should you require additional information with respect to the enclosed, please do not hesitate to contact our office.

With kind regards,

MARTINSIMMONS ARCHITECTS INC.



Jesse French, Associate, Dip. Arch. Tech.  
[jfrench@martinsimmons.ca](mailto:jfrench@martinsimmons.ca)

