

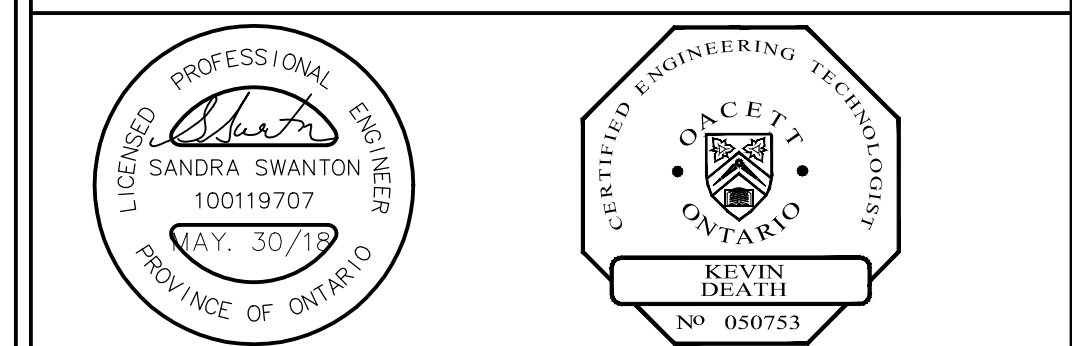
- NOTES:
- PROPOSED SANITARY LINE
  - PROPOSED WATERMAIN
  - PROPOSED STORM SERVICE
  - PROPOSED SANITARY SERVICE
  - PROPOSED WATER SERVICE

No.	REVISIONS	BY	DATE
	CONSTRUCTION		
	TENDER		
	ISSUE FOR APPROVALS		
	ISSUE BLOCK		

**319, 337, 343 WOOLWICH STREET**  
CITY OF WATERLOO REGION OF WATERLOO

**PROPOSED SERVING**

**K. SMART ASSOCIATES LIMITED**  
CONSULTING ENGINEERS AND PLANNERS  
KITCHENER SUDBURY



DESIGNED BY: K.D.	SCALE: 1:300	DATE: MAY 30, 2018
CHECKED BY: S.S.		
DRAWN BY: S.L.		
CHECKED BY: K.D.		
FILE No. 17-070	REVISION No.	SHEET SSP

STRUCTURE	INVERT IN	INVERT OUT
EX. MH	315.30	315.20±
MH1A (1200#)	315.57	315.54
MH2A (1200#)	315.74 315.77	315.71
MH3A (1200#)		315.87
MH4A (1200#)	315.98	315.95
MH5A (1200#)		316.43

STRUCTURE	T/G	INVERT IN	INVERT OUT
EX. DI		312.55	312.50
MH1 (1200#)	315.36	313.19	313.13
STC 750	316.05	315.35 (100mm)	315.27 (250mm)
DICBMH2 (2400#)	316.20	315.25 (100mm) 313.75 (250mm) 313.75 (1500mm)	313.75 (250mm)
MH2 (2400#)	318.85	315.30 (250mm)	313.80 (1500mm)
DICBMH1 (1200#)	316.20	315.40	315.37
DICB1 (600x600mm)	316.20		315.60
CBMH1 (3000#)	318.50	316.04 (1350mm)	315.40 (100mm) 316.65 (150mm)
CBMH2 (3000#)	319.00	316.29 316.29	316.23
MH4 (2400#)	318.32	316.45	316.39
CB2 (600x600mm)	317.10		316.53
MH3 (2400#)	319.55	316.39	316.33
CB1 (600x600mm)	317.10		316.45