

NOTES:
 ○ PROPOSED SANITARY LINE
 = PROPOSED WATERMAIN
 - - - PROPOSED STORM SEWER

SANITARY INVERTS		
STRUCTURE	INVERT IN	INVERT OUT
EX. MH	315.30	315.20±
MH1A (1200#)	315.41	315.38
MH2A (1200#)	315.74 315.77	315.71
MH3A (1200#)		315.79
MH4A (1200#)		316.07

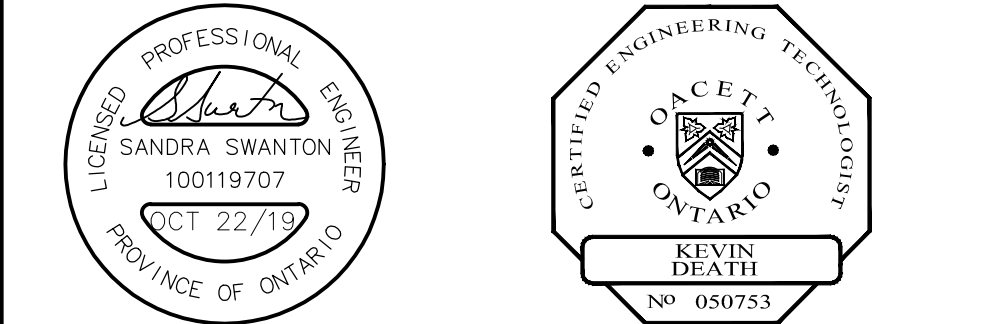
STORM INVERTS			
STRUCTURE	T/G	INVERT IN	INVERT OUT
EX. DI		312.55 (250mm)	312.50 (250mm)
MH1 (1200#)	315.38	313.19 (250mm)	313.13 (250mm)
DICBMH2 (2400#)	316.20	314.99 (100mm) 314.99 (250mm) 313.49 (1500mm)	313.49 (250mm)
MH2 (2400#)	316.70	313.61 (1500mm)	313.58 (1500mm)
DICBMH1 (1200#)	316.10	314.87 (250mm)	314.81 (250mm)
DICB1 (600x600mm)	316.30		314.94 (250mm)
STC 750	316.13	315.50 (250mm)	315.43 (250mm)
DCBMH2 (2400#)	318.50	316.25 (1050mm)	N 315.65 (250mm) NE 316.80 (100mm)
CBMH2 (3000#)	318.50	316.43 (1050mm)	316.37 (1050mm)
MH3 (2400#)	319.00		316.52 (1050mm)

No.	REVISIONS	BY	DATE
	CONSTRUCTION		
	TENDER		
	ISSUE FOR APPROVALS		
	ISSUE BLOCK		

319, 337, 343 WOOLWICH STREET
 CITY OF WATERLOO REGION OF WATERLOO

FUNCTIONAL SERVICING

K. SMART ASSOCIATES LIMITED
 CONSULTING ENGINEERS AND PLANNERS
 KITCHENER SUDBURY



DESIGNED BY: K.D.	SCALE: 1:300	DATE: MAY 30, 2018
CHECKED BY: S.S.		SHEET SSP
DRAWN BY: S.L.		
CHECKED BY: K.D.		
FILE No. 17-070	REVISION No.	